



SELECT SWITCHGEAR & CONTROL
 UNIT 2, 7 MAGNA ROAD, WIGSTON
 LEICESTER LE18 4ZH
 TELEPHONE 0116 2787776
 FAX 0116 2477760
 E-MAIL - INFO@SELECTSWITCHGEAR.CO.UK

CONTRACT No J4167.

CONTRACT emg PLOT 5 LV DISTRIBUTION BOARD 1

CUSTOMER ASSEMBLED BY M. JOYCE DATE 9/3/23
 WALTER MILES ELECTRICAL ENGINEERS. M. McDONAGH

INSPECTION REPORT

CHECK REQUIRED	COMMENTS	PASSED
Metalwork checked & satisfactory		✓
Are sizes of switches to drawing		✓
Are fuse sizes / trips to drawing		✓
Switch door interlocks operate		✓
Padlock facility available & working		✓
Busbars phase marked		✓
Earth bar marked		✓
Earthing to specification	ALL SSCL STANDARD.	✓
External label square and to drg		✓
Internal labeling		✓
Jointing brackets fitted		✓
Gland plates fitted		✓
Danger labels fitted		✓
Incomer rating	3200A	✓
Incomer type	MTZ 2 HI 3200A 4 POLE ACB M.L.S.OX	✓
Main busbar rating	3200A	✓
Main busbar size	TWIN 100X10MM COPPER BAR.	✓
Main busbar position	SEE ADDED SHEET 3.	✓
Earth bar size	40X10MM COPPER BAR.	✓
Earth bar position	TOP/BOTTOM FRONT 4 TH HOLE UP/DOWN	✓
Dropper busbar No1 rating	1600A	✓
Dropper busbar No1 size	80X10MM COPPER BAR	✓
Dropper busbar No2 rating	1400A	✓
Dropper busbar No2 size	60X10MM COPPER BAR	✓
Dropper busbar No3 rating	1250A	✓
Dropper busbar No3 size	50X10MM COPPER BAR.	✓
Cable ratings	ALL SSCL STANDARD.	✓
Intermediate tightness check & mark	} J. McDONAGH (RED)	✓
Tightness check & mark		✓



SELECT SWITCHGEAR & CONTROL
 UNIT 2, 7 MAGNA ROAD, WIGSTON
 LEICESTER LE18 4ZH
 TELEPHONE 0116 2787776
 FAX 0116 2477760
 E-MAIL - INFO@SELECTSWITCHGEAR.CO.UK

TEST REPORT

Section number	FLASH TEST 2KV						MEGGER TEST 500V						PASSED	
	1	2	3	4	5	6	1	2	3	4	5	6		
L1 to L2	PASS						INF							<i>J.McDonagh</i>
L1 to L3	PASS						INF							<i>J.McDonagh</i>
L2 to L3	PASS						INF							<i>J.McDonagh</i>
L1 to Neutral	PASS						INF							<i>J.McDonagh</i>
L2 to Neutral	PASS						INF							<i>J.McDonagh</i>
L3 to Neutral	PASS						INF							<i>J.McDonagh</i>
L1 to Earth	PASS						INF							<i>J.McDonagh</i>
L2 to Earth	PASS						INF							<i>J.McDonagh</i>
L3 to Earth	PASS						INF							<i>J.McDonagh</i>
Neutral to Earth	PASS						INF							<i>J.McDonagh</i>

OTHER TESTS

N/E link position	LIVE SIDE OF MAINS/GENERATOR INCOMERS												
CT size & position	SEE AS FITTED DRAWINGS.												✓
Metering	RAYLEIGH RI-F 200/400ELW.												✓
Restricted earth fault	N/A												N/A
Control circuits	} ALL FACTORY TESTED & FULLY WORKING												✓
Relays / timers / PFC set													✓
Continuity test													✓
As fitted drawings													✓
Component instructions inc.													✓
Busbar links & bolts													✓
Photographs taken	N/A												N/A

REWORK REQUIRED

SELECT SWITCHGEAR & CONTROL LTD

WITNESSED BY

SIGNED

J.McDonagh

NAME

J.McDONAGH

SIGNED

NAME



SELECT SWITCHGEAR & CONTROL
 UNIT 2, 7 MAGNA ROAD, WIGSTON
 LEICESTER LE18 4ZH
 TELEPHONE 0116 2787776
 FAX 0116 2477760
 E-MAIL - INFO@SELECTSWITCHGEAR.CO.UK

CONTRACT No J4167A .

CONTRACT EM9 PLOT 5 LV DISTRIBUTION BOARD 2.

CUSTOMER.

WALTER MILES ELECTRICAL ENG.

ASSEMBLED BY M. JOYLE

J. McDONAGH

DATE

22/3/23

INSPECTION REPORT

CHECK REQUIRED	COMMENTS	PASSED
Metalwork checked & satisfactory		✓
Are sizes of switches to drawing		✓
Are fuse sizes / trips to drawing		✓
Switch door interlocks operate		✓
Padlock facility available & working		✓
Busbars phase marked		✓
Earth bar marked		✓
Earthing to specification	ALL SSCL STANDARD.	✓
External label square and to drg		✓
Internal labeling		✓
Jointing brackets fitted		✓
Gland plates fitted		✓
Danger labels fitted		✓
Incomer rating	3200A	✓
Incomer type	MTZ 2 HI 3200A 4 POLE ACB MLS.0X	✓
Main busbar rating	3200A	✓
Main busbar size	TWIN 100X10mm COPPER BAR.	✓
Main busbar position	SEE SHEET 3.	✓
Earth bar size	40X10mm COPPER BAR.	✓
Earth bar position	TOP FRONT 4 TH HOLE DOWN.	✓
Dropper busbar No1 rating	2000A	✓
Dropper busbar No1 size	100X10mm COPPER BAR.	✓
Dropper busbar No2 rating	1600A	✓
Dropper busbar No2 size	80X10mm COPPER BAR.	✓
Dropper busbar No3 rating	1250A	✓
Dropper busbar No3 size	50X10mm COPPER BAR.	✓
Cable ratings	ALL SSCL STANDARD.	✓
Intermediate tightness check & mark	} J. McDONAGH (RED)	✓
Tightness check & mark		✓



SELECT SWITCHGEAR & CONTROL
 UNIT 2, 7 MAGNA ROAD, WIGSTON
 LEICESTER LE18 4ZH
 TELEPHONE 0116 2787776
 FAX 0116 2477760
 E-MAIL - INFO@SELECTSWITCHGEAR.CO.UK

TEST REPORT

Section number	FLASH TEST 2KV						MEGGER TEST 500V						PASSED	
	1	2	3	4	5	6	1	2	3	4	5	6		
L1 to L2	PASS						INF							<i>J.P.H.</i>
L1 to L3	PASS						INF							<i>J.P.H.</i>
L2 to L3	PASS						INF							<i>J.P.H.</i>
L1 to Neutral	PASS						INF							<i>J.P.H.</i>
L2 to Neutral	PASS						INF							<i>J.P.H.</i>
L3 to Neutral	PASS						INF							<i>J.P.H.</i>
L1 to Earth	PASS						INF							<i>J.P.H.</i>
L2 to Earth	PASS						INF							<i>J.P.H.</i>
L3 to Earth	PASS						INF							<i>J.P.H.</i>
Neutral to Earth	PASS						INF							<i>J.P.H.</i>

OTHER TESTS

N/E link position	LIVE SIDE OF MAINS / GENERATOR INCOMER ✓	
CT size & position	SEE AS FITTED DRAWINGS.	✓
Metering	RAYLEIGH RI-F 200 / 400 ELW.	✓
Restricted earth fault	N/A	N/A
Control circuits	} ALL SSCL FACTORY TESTED & FULLY WORKING.	✓
Relays / timers / PFC set		✓
Continuity test		✓
As fitted drawings		✓
Component instructions inc.		✓
Busbar links & bolts		✓
Photographs taken	N/A	N/A

REWORK REQUIRED

SELECT SWITCHGEAR & CONTROL LTD				WITNESSED BY			
SIGNED	<i>J.P.H.</i>	NAME	J. McDONAGH	SIGNED		NAME	



SELECT SWITCHGEAR
& CONTROL LIMITED

Unit 2, 7 Magna Road, Wigston, Leicester, LE18 4ZH

T: 0116 2787776 | F: 0116 2477760 | E: info@selectswitchgear.co.uk

Site Test Report

Site: Plot 5 East Midlands Gateway 24th March 2023

Address: Walter Miles Electrical Engineers Ltd
C/O Winvic Construction
Plot 5 East Midlands Gateway
Segro Logistics Park
DE74 2BB

Contract No. J4167 LV SWITCH BOARD 1

Customer: Walter Miles Electrical Engineers Ltd

Section number	FLASH TEST 2KV						MEGGAR TEST 500V						SIGNED								
	1	2	3	4	5	6	1	2	3	4	5	6									
L1 - L2	23.2						✓														
L1 - L3	38.1						✓														
L2 - L3	19.74						✓														
L1 - NEUTRAL	63.6						✓														
L2 - NEUTRAL	51.5						✓														
L3 - NEUTRAL	39.6						✓														
L1 - EARTH	439						✓														
L2 - EARTH	440						✓														
L3 - EARTH	435						✓														
NEUTRAL - EARTH	410						✓														

- Neutral - Earth link re-connected if fitted
- All fuses replaced after Flash/Megger tests
- Neutral connection replaced in surge arrestor
- All tools removed from panel
- Panel surfaces cleaned
- Top of switchboard sealed

Signed By:

Witnessed By:



SELECT SWITCHGEAR
& CONTROL LIMITED

Unit 2, 7 Magna Road, Wigston, Leicester, LE18 4ZH

T: 0116 2787776 | F: 0116 2477760 | E: info@selectswitchgear.co.uk

Site Test Report

Site: Plot 5 East Midlands Gateway 24th March 2023

Address: Walter Miles Electrical Engineers Ltd
C/O Winvic Construction
Plot 5 East Midlands Gateway
Segro Logistics Park
DE74 2BB

Contract No. J4167 LV SWITCHBOARD 2

Customer: Walter Miles Electrical Engineers Ltd

Section number	FLASH TEST 2KV						MEGGAR TEST 500V						SIGNED	
	1	2	3	4	5	6	1	2	3	4	5	6		
L1 - L2	✓						359							<i>[Signature]</i>
L1 - L3	✓						903							<i>[Signature]</i>
L2 - L3	✓						531							<i>[Signature]</i>
L1 - NEUTRAL	✓						590							<i>[Signature]</i>
L2 - NEUTRAL	✓						917							<i>[Signature]</i>
L3 - NEUTRAL	✓						>1000							<i>[Signature]</i>
L1 - EARTH	✓						>1000							<i>[Signature]</i>
L2 - EARTH	✓						>1000							<i>[Signature]</i>
L3 - EARTH	✓						>1000							<i>[Signature]</i>
NEUTRAL - EARTH	✓						>1000							<i>[Signature]</i>

Neutral - Earth link re-connected if fitted *M. JOYCE*

If fuses replaced after Flash/Megger tests *D. McDONAGH*

Neutral connection replaced in surge arrester *D. McDONAGH*

If tools removed from panel *ALL.*

Panel surfaces cleaned *J. McDONAGH*

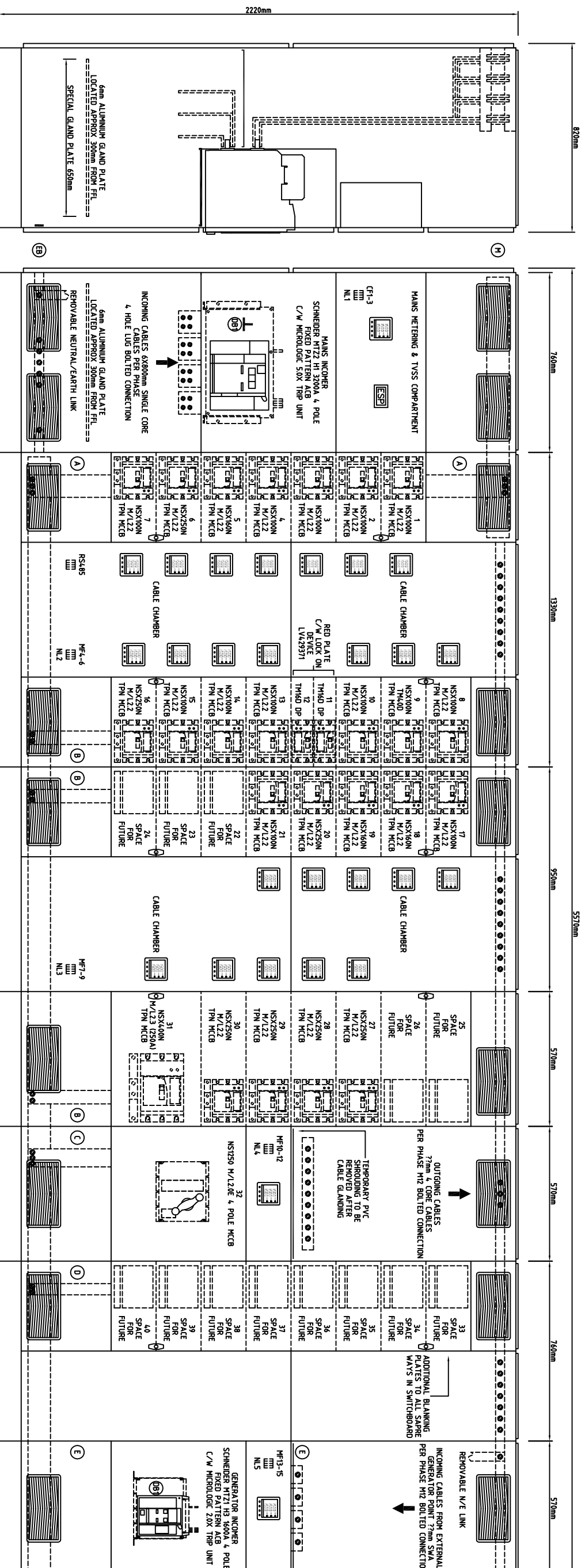
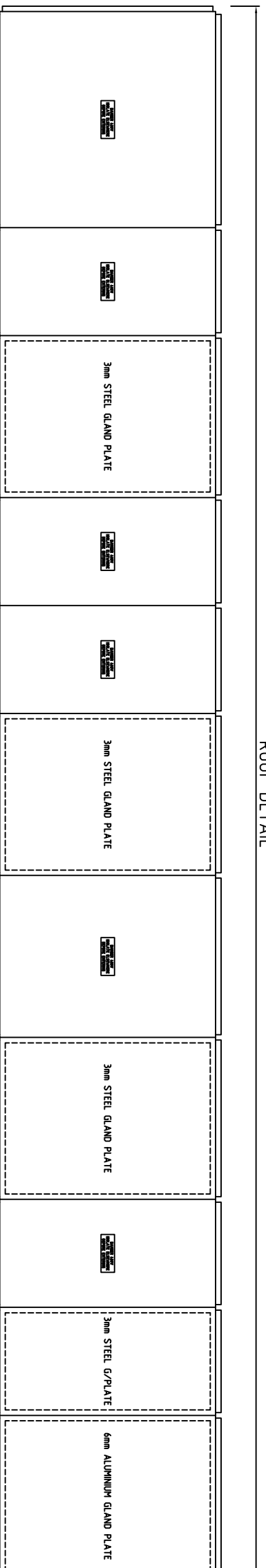
Top of switchboard sealed *D. McDONAGH*

Signed By *[Signature]*

Witnessed By *[Signature]*

MAIN LV PANEL

SUPPLY VOLTAGE	230/400V 50Hz
BUILD STANDARD	BS6841/39
FORM	FORM 4 TYPE 2
CONSTRUCTION	LOSS TRIP MODULES
P RATING	IP31
COLOR	PAVONS LIGHT GREY
VENTILATION	SSE STANDARD VENTING
INCOMING CABLES	BOTTOM ENTRY
OUTGOING CABLES	TOP EXIT
PANEL ACCESS	FRONT
BUSBAR SUPPORTS	SOCOMEK SECUB 4 POLE
METERING INCOMING	PATTECH PR200
METERING OUTGOING	N/A
EVIEWS	SCHNEIDER
SMART CIRCUIT RATING	65KA
ASTA CERTIFIED	CERTIFICATE No 99908
MAINS ROSSBANS	H 17MM 100X70mm
DROPER ROSSBANS	A 60X70mm
	B 60X70mm
	C 60X70mm
	D 60X70mm C/W SRE/AGERS
	E 60X70mm TOP/BOTTOM FRONT
EARTH BAR	EB 60X70mm TOP/BOTTOM FRONT



CUSTOMER
WALTER MILES ELECTRICAL ENGINEERS LTD

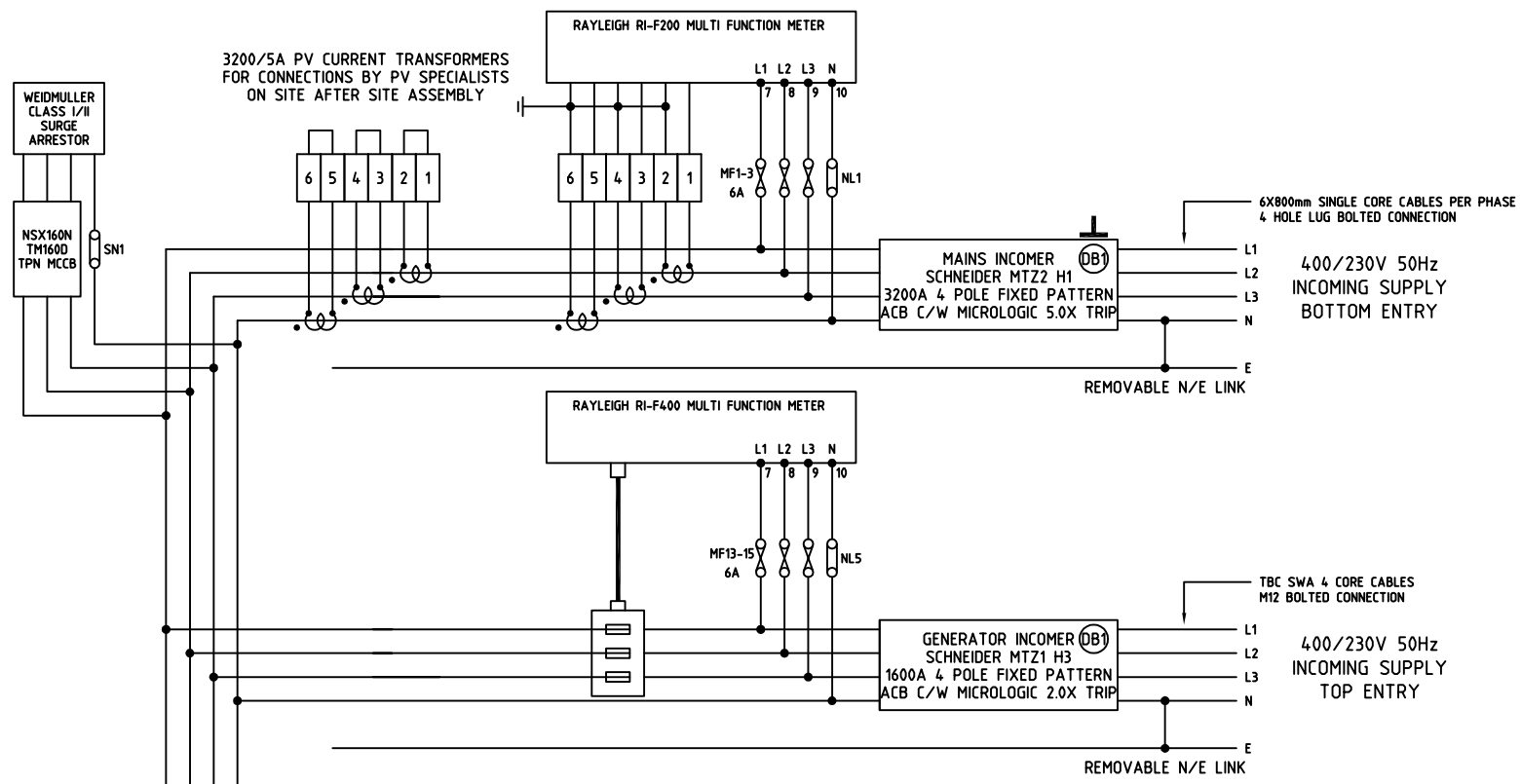
TITLE
**EMG PLOT 5
LV DISTRIBUTION BOARD 1**

SELECT SWITCHGEAR & CONTROL
Unit 2, 7 Magna Road, Wigston, Leicester LE18 4ZH
Telephone 0116 2787776 Fax 0116 2477760
e-mail - info@selectswitchgear.co.uk



REV	DESCRIPTION	DATE
A	SWITCHBOARD UPGRADED TO FIT-OUT	13-12-22
B	1600A GENERATOR INCOMER ADDED	3-1-23
C	40A MCCB TO WAY 21/METERING ADDED	2-2-23
D		
E		
F		

DRAWN	J DENHAM	ISSUE	4	SHEET No	1 OF 2	DATE	23-11-22	DRAWING No	JL167
-------	----------	-------	---	----------	--------	------	----------	------------	-------



REF	MCCB	SET AT	LABEL	CABLE	TERMINATION	ENTRY
1	NSX100N M/L2.2	80A	DB3 GROUND FLOOR OFFICE	25mm 4 CORE CABLES	M6 BOLT	TOP
2	NSX100N M/L2.2	80A	DB4 FIRST FLOOR OFFICE	25mm 4 CORE CABLES	M6 BOLT	TOP
3	NSX100N M/L2.2	80A	DB5 SECOND FLOOR OFFICE	25mm 4 CORE CABLE	M6 BOLT	TOP
4	NSX100N M/L2.2	80A	DB6 THIRD FLOOR OFFICE	25mm 4 CORE CABLE	M6 BOLT	TOP
5	NSX160N M/L2.2	160A	DB7 OFFICE MECH	70mm 4 CORE CABLES	M8 BOLT	TOP
6	NSX250N M/L2.2	250A	DB10 OFFICE MECH	120mm 4 CORE CABLES	M8 BOLT	TOP
7	NSX100N M/L2.2	100A	DB8 WAREHOUSE POWER	50mm 4 CORE CABLES	M6 BOLT	TOP
8	NSX100N M/L2.2	63A	DB9 GATEHOUSE	35mm 4 CORE CABLES	M6 BOLT	TOP
9	NSX100N TMA0D	40A	EXT1 EXTERNAL LIGHTING 1	6mm 4 CORE CABLES	M6 BOLT	TOP
10	NSX100N M/L2.2	20A	LIFT SUPPLY	6mm 4 CORE CABLE	M6 BOLT	TOP
11	NSX100N TM16D	16A	FIRE ALARM PANEL	2.5mm 3 CORE CABLE	M6 BOLT	TOP
12	NSX100N TM16D	16A	DISABLED REFUGE PANEL	2.5mm 3 CORE CABLE	M6 BOLT	TOP
13	NSX100N M/L2.2	40A	ROLLER SHUTTER DOOR BUSBAR GL 13/A	10mm 4 CORE CABLES	M6 BOLT	TOP
14	NSX100N M/L2.2	40A	ROLLER SHUTTER DOOR BUSBAR GL 18/A	10mm 4 CORE CABLES	M6 BOLT	TOP
15	NSX100N M/L2.2	100A	FUTURE NORTH HUB	??mm 4 CORE CABLE	M6 BOLT	TOP
16	NSX250N M/L2.2	160A	AHU01 BATTERY	70mm 4 CORE CABLES	M8 BOLT	TOP
17	NSX100N M/L2.2	100A	AHU01	35mm 4 CORE CABLE	M6 BOLT	TOP
18	NSX160N M/L2.2	160A	CU01	50mm 4 CORE CABLES	M8 BOLT	TOP
19	NSX160N M/L2.2	160A	CU02	50mm 4 CORE CABLES	M8 BOLT	TOP
20	NSX250N M/L2.2	200A	FP1 EVC DB	95mm 4 CORE CABLES	M8 BOLT	TOP
21	NSX100N M/L2.2	100A	LINK BRIDGE LIFT	10mm 4 CORE CABLE	M6 BOLT	TOP
22	FUTURE					TOP
23	FUTURE					TOP
24	FUTURE					
25	FUTURE					
26	FUTURE					
27	NSX250N M/L2.2	200A	FP2 EVC DB	95mm 4 CORE CABLE	M8 BOLT	TOP
28	NSX250N M/L2.2	200A	FP3 EVC DB	120mm 4 CORE CABLE	M8 BOLT	TOP
29	NSX250N M/L2.2	200A	FP4 EVC DB	150mm 4 CORE CABLE	M8 BOLT	TOP
30	NSX250N M/L2.2	200A	FP6 EVC DB	95mm 4 CORE CABLE	M8 BOLT	TOP
31	NSX400N M/L2.3	250A TRIP 200A	FP5 EVC DB	240mm 4 CORE CABLE	M8 BOLT	TOP
32	NS1250N M/L2.0E	1250A	PV DISTRIBUTION BOARD	??mm 4 CORE CABLE	M8 BOLT	TOP
33	FUTURE					
34	FUTURE					
35	FUTURE					
36	FUTURE					
37	FUTURE					
38	FUTURE					
39	FUTURE					
40	FUTURE					

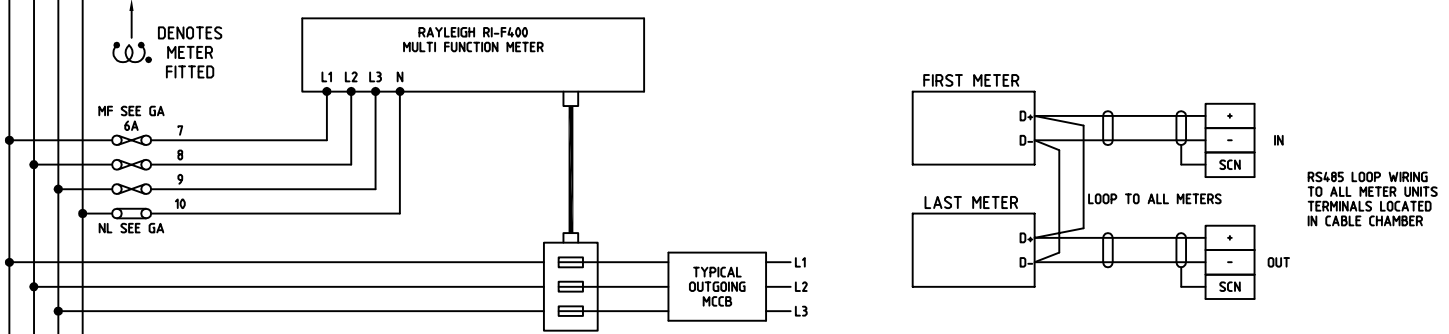
NARROW PALM LUGS REQUIRED

RED COVER

NARROW PALM LUGS REQUIRED

NARROW PALM LUGS REQUIRED

NARROW PALM LUGS REQUIRED



CUSTOMER
WALTER MILES ELECTRICAL ENGINEERS LTD

TITLE
EMG PLOT 5
LV DISTRIBUTION BOARD 1



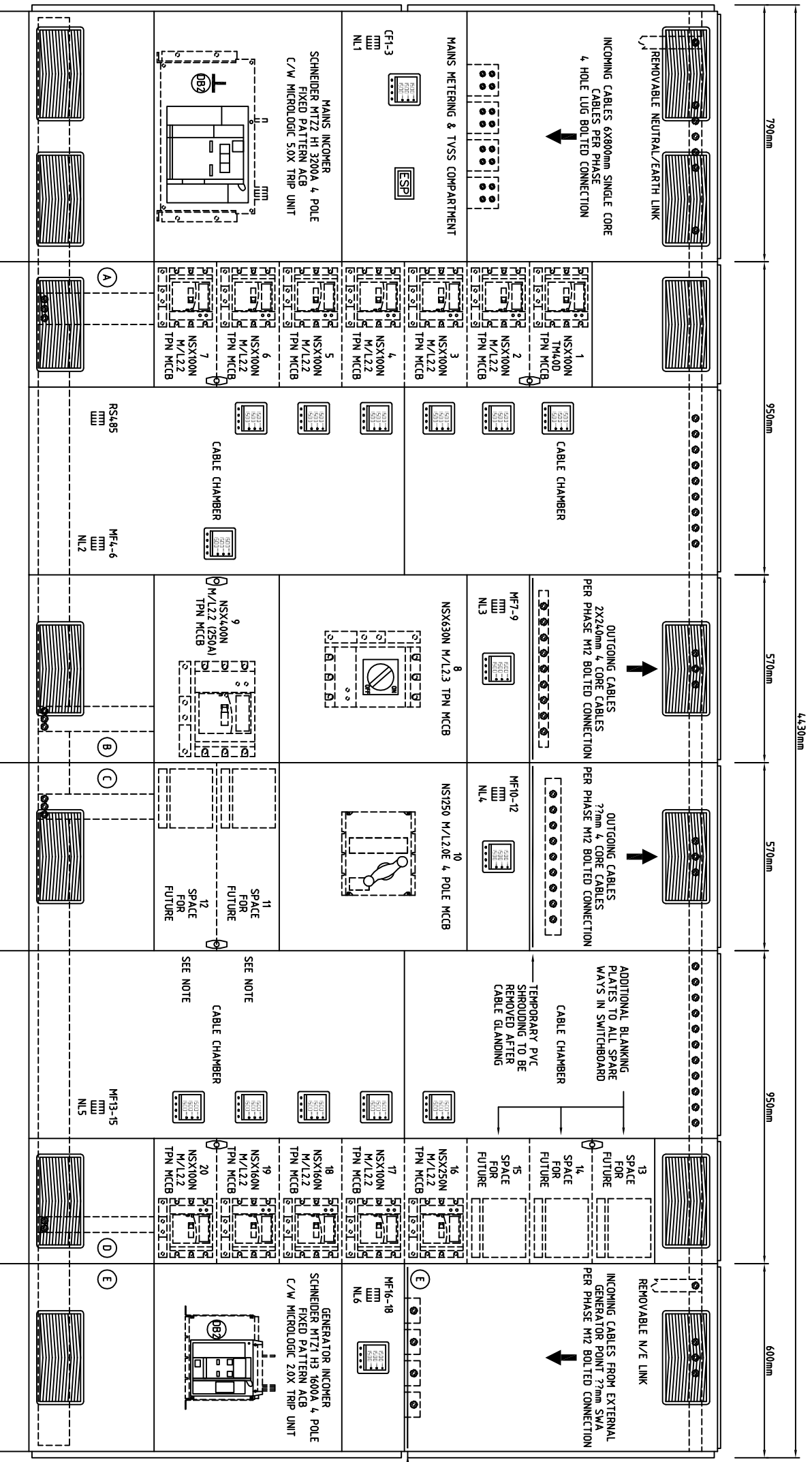
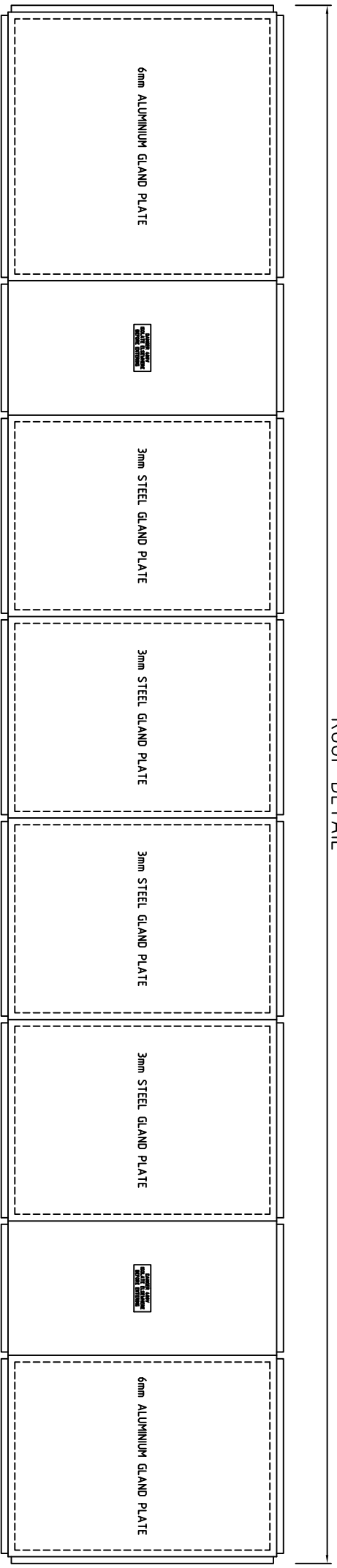
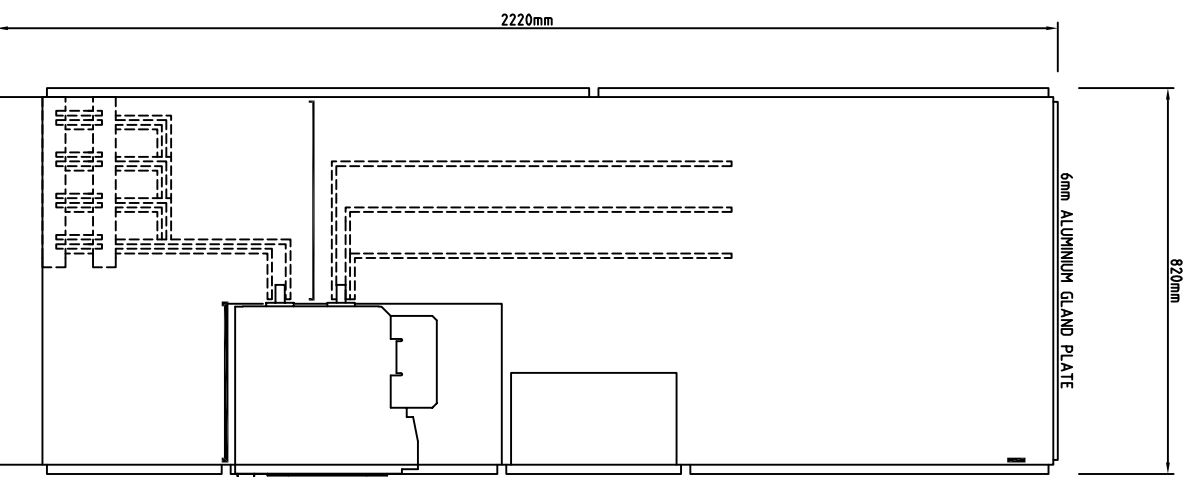
SELECT SWITCHGEAR & CONTROL
Unit 2, 7 Magna Road, Wigston, Leicester LE18 4ZH
Tel : 0116 2787776 Fax : 0116 247760
e-mail - info@selectswitchgear.co.uk

REV	DESCRIPTION	DATE
A	SWITCHBOARD UPGRADED TO FITOUT	13-12-22
B	1600A GENERATOR INCOMER ADDED	3-1-23
C	40A MCCB ADDED TO WAT 21/METERING ADDED	2-2-23
D		
E		
F		

DRAWN	ISSUE	SHEET No	DATE	DRAWING No
J DENHAM	4	2 OF 2	23-11-23	J4167

ROOF DETAIL

SUPPLY VOLTAGE	230/400V 50Hz
BUILD STANDARD	BSEN6139
FORM	FORM 4, TYPE 2
CONSTRUCTION	LOGSTRIP MODULAR
IP RATING	IP31
COLOR	RAL7035 LIGHT GREY
VENTILATION	SSC STANDARD VENTING
INCOMING CABLES	TOP ENTRY
OUTGOING CABLES	TOP EXIT
PANEL ACCESS	FRONT
BUSBAR SUPPORTS	SOCOMET SRCTO 4 POLE
METERING INCOMING	RAYLEIGH REF200
METERING OUTGOING	N/A
DEVICES	SCHNEIDER
SHORT CIRCUIT RATING	65kA
ASTA CERTIFIED	CERTIFICATE No 19908
MANS BUSBARS	H TWIN 100X10mm
DROPPER BUSBARS	A 100X10mm
	B 80X10mm
	C 80X10mm
	D 50X10mm
EARTH BAR	E 80X10mm C/W SPREADERS
	EB 40X10mm TOP/BOTTOM FRONT



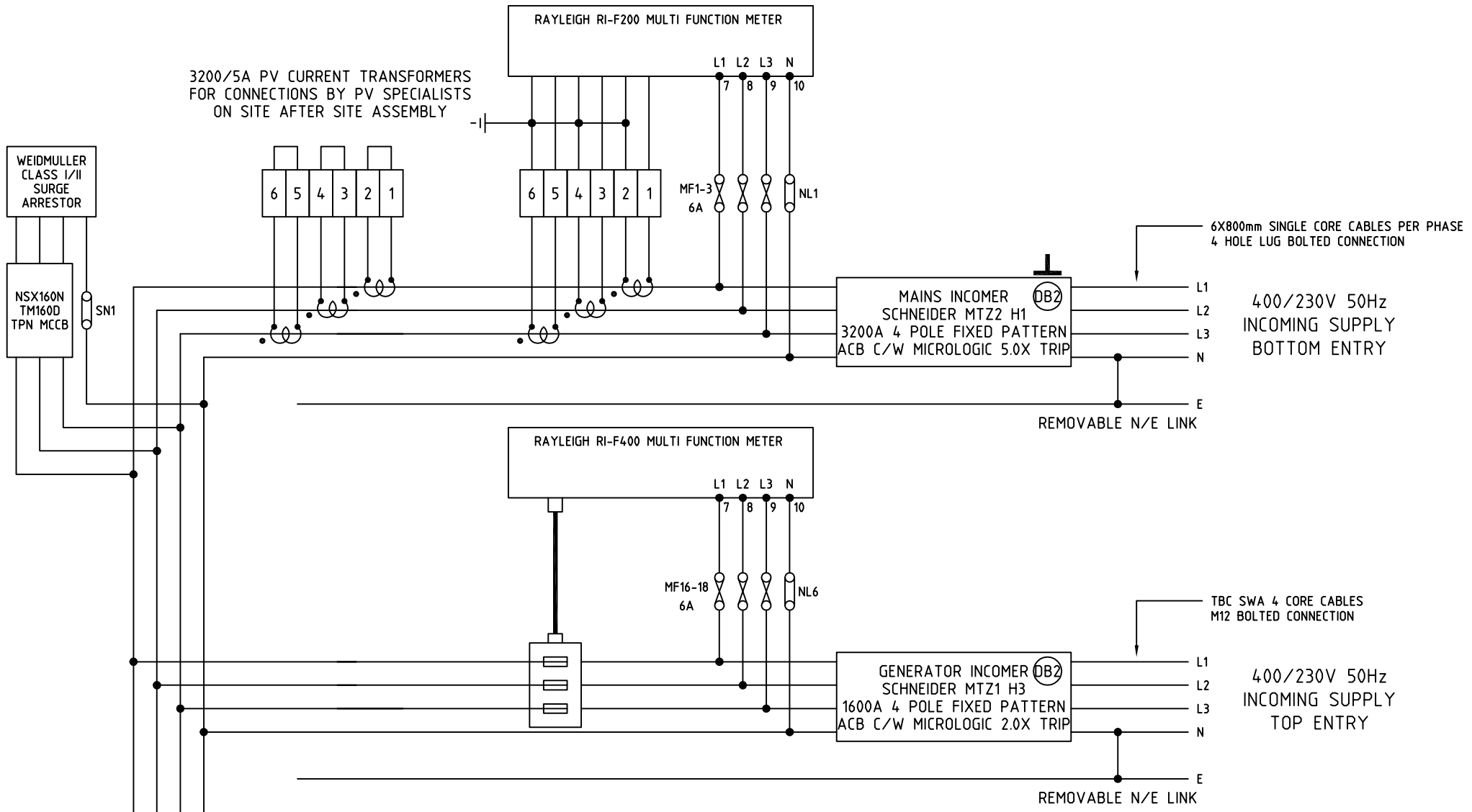
CUSTOMER
WALTER MILES ELECTRICAL ENGINEERS LTD

TITLE
EMG PLOT 5
LV DISTRIBUTION BOARD 2

SELECT SWITCHGEAR & CONTROL
 Unit 2, 7 Magna Road, Wigston, Leicester LE18 4ZH
 Telephone 0116 2787776 Fax 0116 2477760
 e-mail - info@selectswitchgear.co.uk

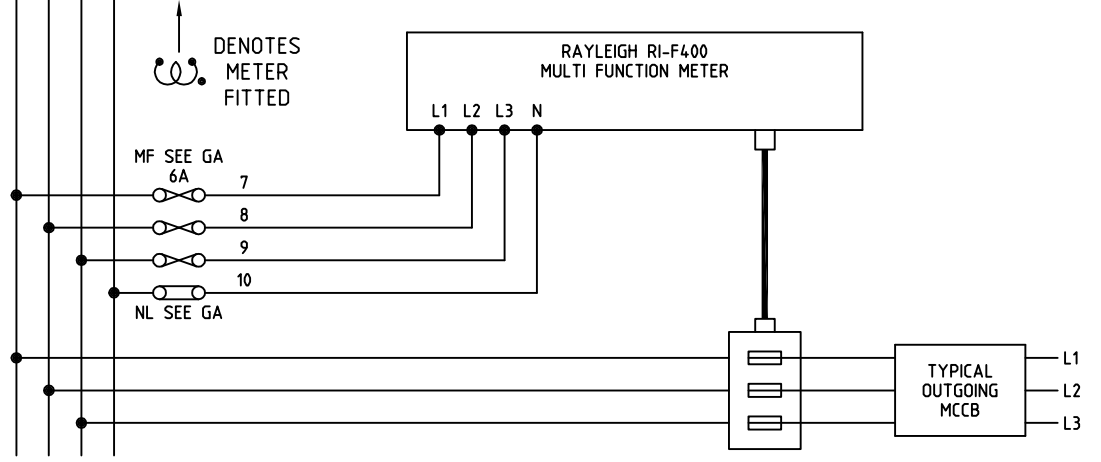
REV	DESCRIPTION	DATE
A	SWITCHBOARD UPGRADED TO FIT-OUT	13-12-22
B	1600A GENERATOR INCOMER ADDED	22-12-22
C	INCOMER CHANGED TO TOP ENTRY	2-2-23
D	WAY 8 CHANGED TO 630A/METERING ADDED	2-2-23
E		
F		

DRAWN J DENHAM
 ISSUE 5
 SHEET No 1 OF 2
 DATE 23-11-22
 DRAWING No JL167A

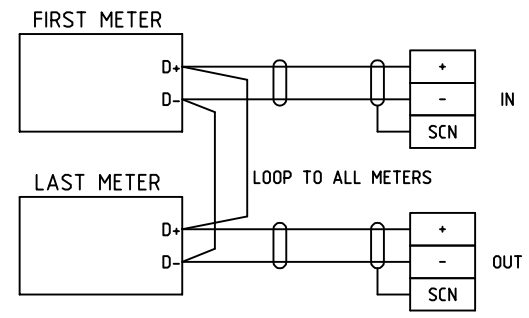


REF	MCCB	SET AT	LABEL	CABLE	TERMINATION	ENTRY
1	NSX100N TM40D	40A	EXT2 EXTERNAL LIGHTING 2	6mm 4 CORE CABLES	M6 BOLT	TOP
2	NSX100N M/L2.2	100A	WAREHOUSE LIGHTING BUSBAR ROW 1-21	35mm 4 CORE CABLE	M6 BOLT	TOP
3	NSX100N M/L2.2	100A	WAREHOUSE LIGHTING BUSBAR ROW 22-42	70mm 4 CORE CABLE	M6 BOLT	TOP
4	NSX100N M/L2.2	100A	WAREHOUSE LIGHTING BUSBAR ROW 43-63	95mm 4 CORE CABLE	M6 BOLT	TOP
5	NSX100N M/L2.2	40A	ROLLER SHUTTER DOOR BUSBAR GL13/J	10mm 4 CORE CABLE	M6 BOLT	TOP
6	NSX100N M/L2.2	40A	ROLLER SHUTTER DOOR BUSBAR GL18/J	10mm 4 CORE CABLE	M6 BOLT	TOP
7	NSX100N M/L2.2	63A	DB21 SPRINKLER PUMPHOUSE	35mm 4 CORE CABLES	M6 BOLT	TOP
8	NSX630N M/L2.3	630A	DB30 WAREHOSE CENTRAL BATTERY	2X240mm 4 CORE CABLES	M12 BOLT	TOP
9	NSX400N M/L2.2	250A TRIP 200A	DB20 WAREHOUSE & MEZZANINE BOARD	240mm 4 CORE CABLES	M10 BOLT	TOP
10	NS1250N M/L2.0E	1250A	FUTURE PV DISTRIBUTION BOARD	??mm 4 CORE CABLE	M12 BOLT	TOP
11	FUTURE					
12	FUTURE					
13	FUTURE					
14	FUTURE					
15	FUTURE					
16	NSX250N M/L2.2	160A	AHU02 BATTERY	70mm 4 CORE CABLES	M8 BOLT	TOP
17	NSX100N M/L2.2	100A	AHU02	35mm 4 CORE CABLE	M6 BOLT	TOP
18	NSX160N M/L2.2	125A	CU03	50mm 4 CORE CABLES	M8 BOLT	TOP
19	NSX160N M/L2.2	125A	CU04	50mm 4 CORE CABLES	M8 BOLT	TOP
20	NSX100N M/L2.2	100A	FUTURE SOUTH HUB	??mm 4 CORE CABLE	M6 BOLT	TOP

NARROW PALM LUGS REQUIRED



RS485 LOOP WIRING TO ALL METER UNITS TERMINALS LOCATED IN CABLE CHAMBER



CUSTOMER
WALTER MILES ELECTRICAL ENGINEERS LTD

TITLE
EMG PLOT 5
LV DISTRIBUTION BOARD 2



SELECT SWITCHGEAR & CONTROL
Unit 2, 7 Magna Road, Wigston, Leicester LE18 4ZH
Tel : 0116 2787776 Fax : 0116 2477760
e-mail - info@selectswitchgear.co.uk

REV	DESCRIPTION	DATE
A	SWITCHBOARD UPGRADED TO FIT-OUT	13-12-22
B	1600A GENERATOR INCOMER ADDED	22-12-22
C	NO MODS THIS SHEET	2-2-23
D	WAY 8 CHANGED TO 630A/METERING ADDED	2-2-23
E		
F		

DRAWN	ISSUE	SHEET No	DATE	DRAWING No
J DENHAM	5	2 OF 2	23-11-22	J4167A